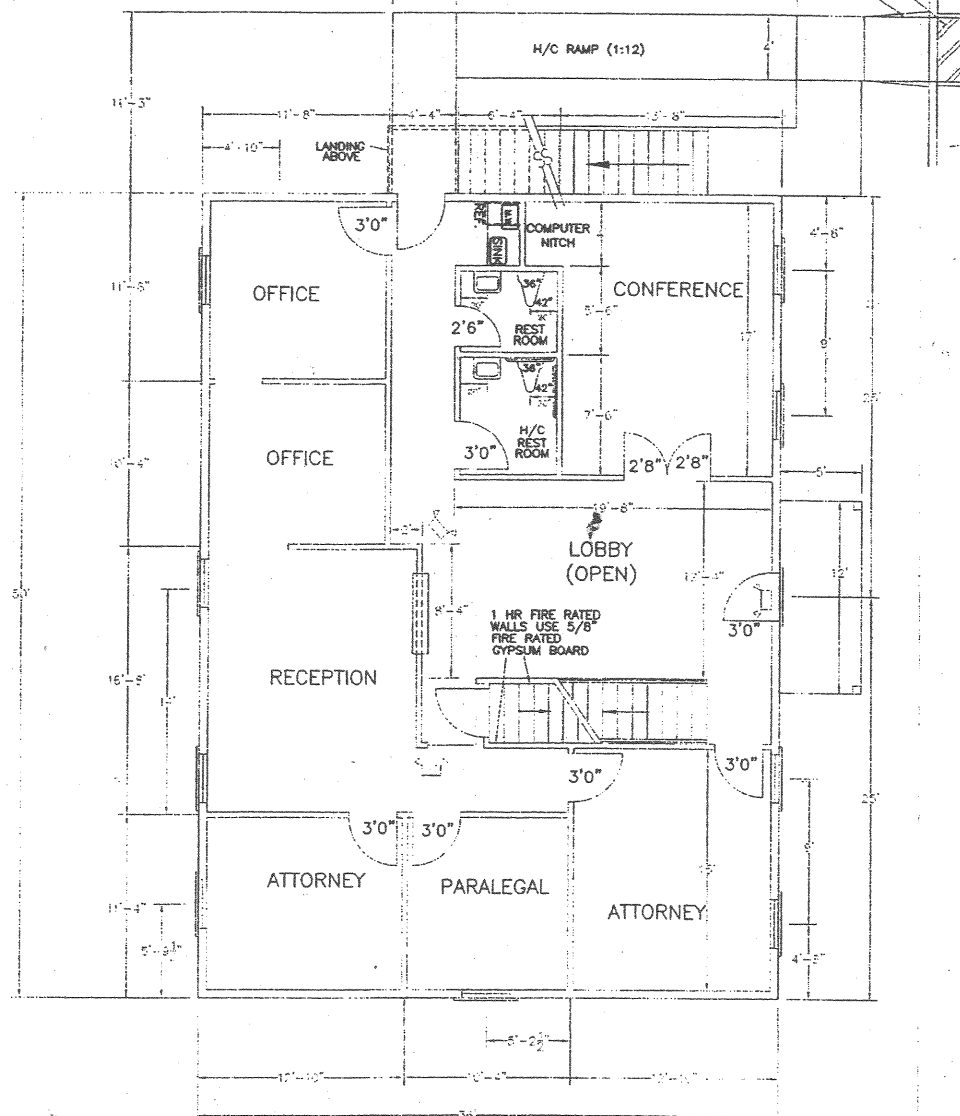


2nd FLOOR
 SCALE: 1/4" = 1'
 1571 S.F.

⌂ = EMERGENCY EXIT AND LIGHT COMBO

- GENERAL NOTES
1. ALL INTERIOR STAIR CASE HANDRAILS TO BE 34" HIGH.
 2. HANDICAP GRAB BARS TO BE 34"-36" FROM FLOOR.
 3. MICROWAVE TO BE ON COUNTERTOP.
 4. THE BREAK ROOM SINK TO BE HANDICAP ACCESSIBLE.



1st FLOOR
 SCALE: 1/4" = 1'
 1800 S.F.

Fire Inspections Required
 150% 180% 100%

Blair
 5/14/03

450 SOUTH PEACHTREE STREET

Cornerstone Planning Co.
 P.O. BOX 793 ■ ROSWELL, GA 30088
 FAX: 770-271-9477 ■ OFFICE: 770-271-7799
 ■ LAND AND DEVELOPMENT PLANNING

OFFICE BUILDING PLANS FOR:
JOHN W. PURCELL AND MAGNOLIA STATION
 LAND LOT 243 2ND 6TH DISTRICT
 CITY OF NORCROSS, GEORGIA
 GWINNETT COUNTY, GEORGIA

DATE	DESCRIPTION



DATE	DESCRIPTION